

CONDÉ NAST COLLEGE OF FASHION AND DESIGN  
FASHION STYLING COURSE

**STYLING PORTFOLIO**

LIGHTING AND BACKGROUND



BURBERRY TRENCH COAT AD 1990'S



BLACK AND WHITE



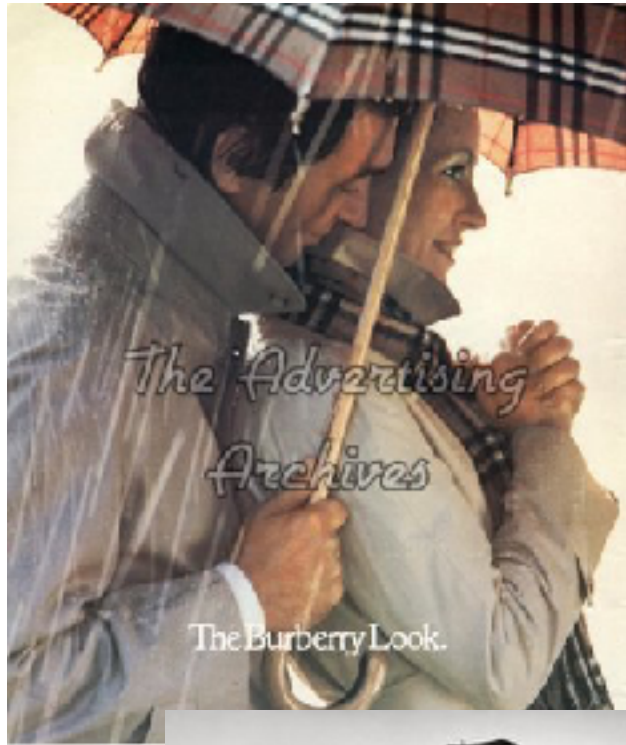
POSES

TWIGGY PORTRAIT BY DAVID BAILEY

# STYLING THE ICONIC BURBERRY TRENCH COAT EDITORIAL SHOOT



STYLING AN UMBRELLA



SHOT FROM BELOW



JUMPING



OVER THE SHOULDER

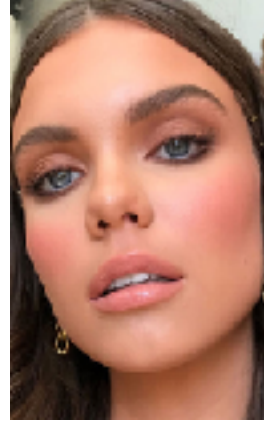






SIMPLISTIC FOCUS IS ON THE TRENCH COAT  
**MAKEUP**

SOFT, NATURAL MAKEUP



@beth\_amery

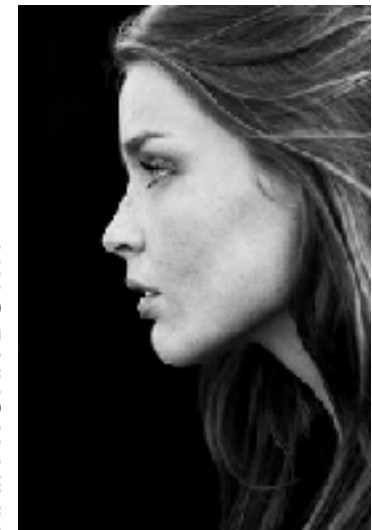
**HAIR**



WINDSWEPT LOOK



HAIR WORN DOWN



STYLED BY MYSELF AND GRACE SERRIDGE  
PHOTOGRAPHY BY ED MILES  
HAIR AND MAKEUP BY BETHANY RICH  
MODEL BETH EASDOWN



























The brand are passionate to create bags which 'exude quality and ooze style'. Our first shoot shows a dinner party, table laid, appetiser finished and main course ready, the gold clutch. So desirable it is the main course, the best part of the

'RUSI IS PASSIONATE ABOUT CREATING BEAUTIFUL HANDBAGS THAT EXUDE ARTISANAL QUALITY, OOZE STYLE AND BRING UNMATCHED PRACTICALITY.'

RUSIDESIGNS



JACQUEMUS



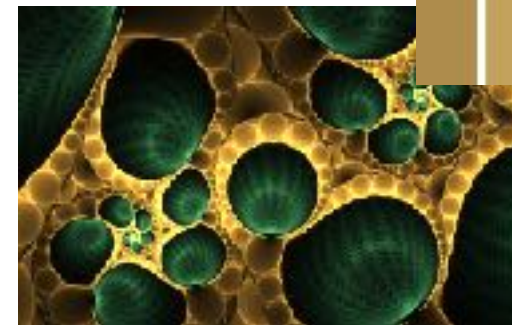
COLOUR SCHEME

# Arm Candy

Nothing against a classic LBB (little black bag), but this season we're reaching for purses with character. Show them off with statement nails and jewelry.

Photograph by Thomas Liggett. Fashion style: Kara Martinez de Bales.  
LIFE IS NOT JUST HOW YOU LIVE, IT'S HOW YOU FEEL ABOUT THE BAGS OF THE MOMENT. (LBB) ISN'T IT?  
NOW WITH A COOL FAUX, SHE WEARABLE WITH NO OTHER EFFORT.  
Pocket Size bag cost: \$200.00. Designer: RUSI. Color: Gold. Material: Leather. Size: 10x10x4.5. Color: Gold. Material: Leather. Size: 10x10x4.5.

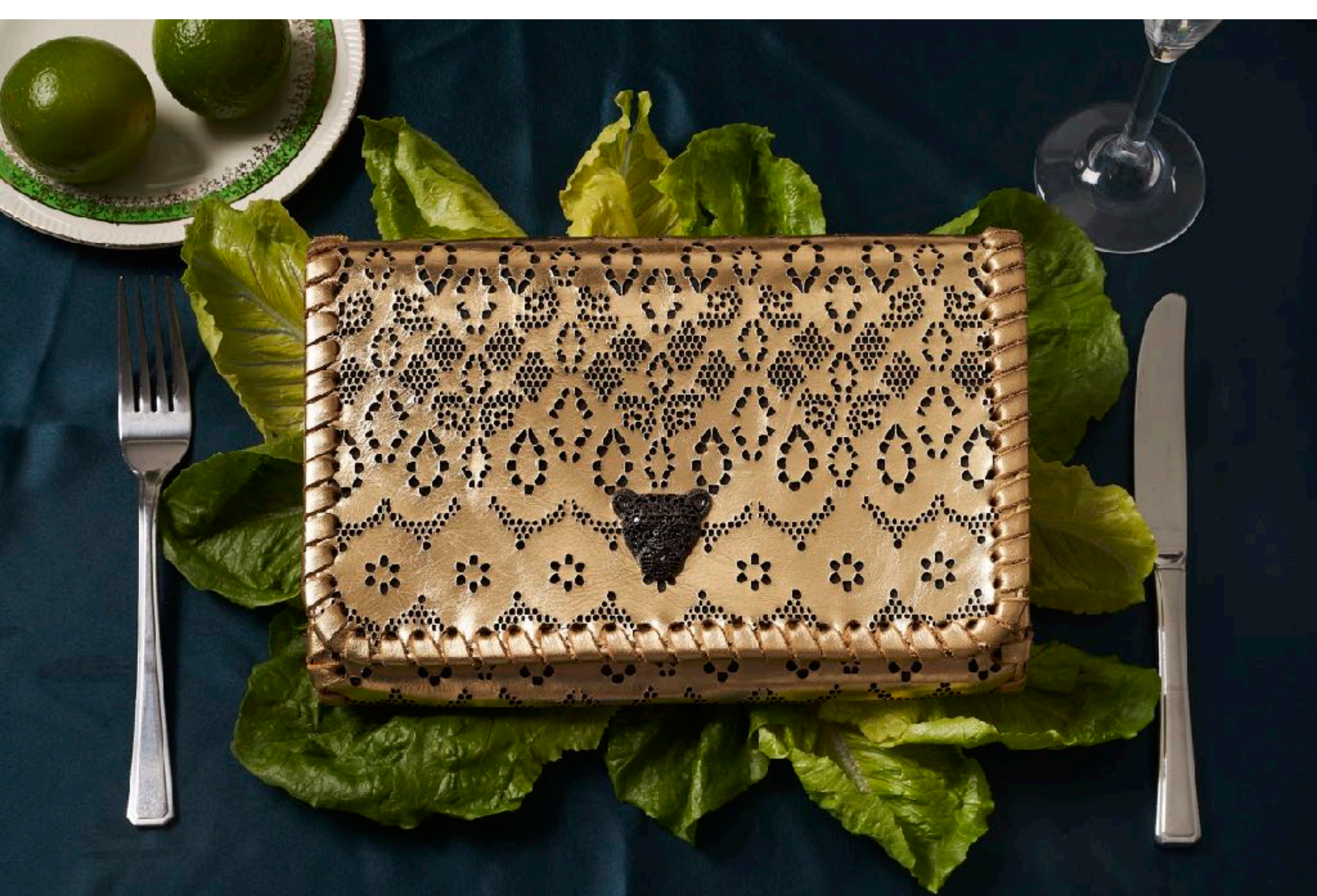
© prouder



## RusiDesigns GOLD CLUTCH BAG STILL-LIFE SHOOT

- PHOTOSHOOT ONE -





STYLED BY MYSELF AND GRACE SERRIDGE  
CLUTCH BAG BY RUSIDESIGNS  
PHOTOGRAPHY BY XAVIER YOUNG



LIGHTING



ANGLES



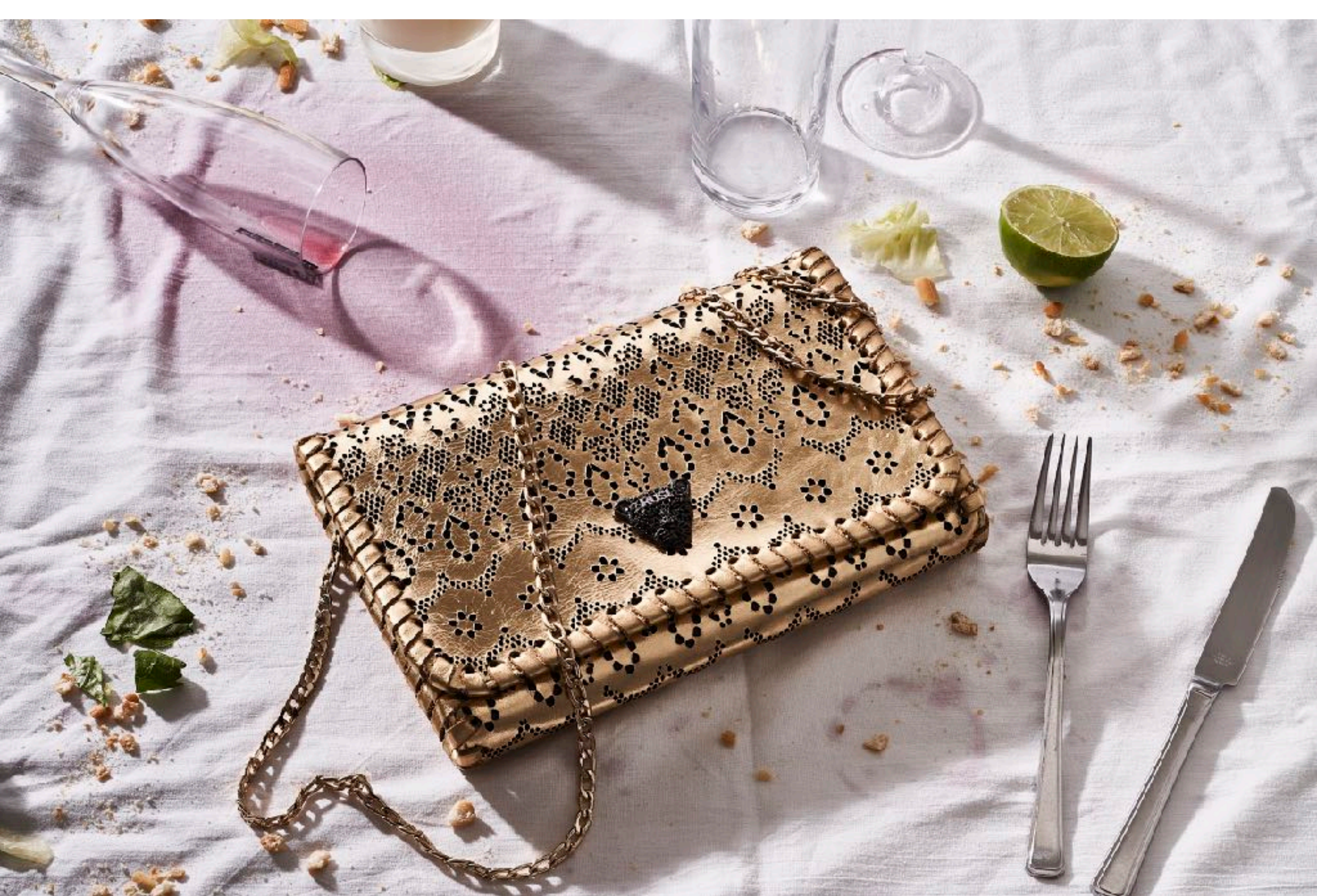
'HER BAGS ARE NOT ONLY DESIRABLE, BUT MADE TO LAST.'



'BECAUSE AS RUSI SAYS  
"THE WORLD DOES NOT NEED ANOTHER THROW AWAY FASHION BRAND".'

In conjunction with the brands moto '**MADE TO LAST**' the theme for our second shoot shows the scene after a dinner party, in amongst all the mess and destruction the bag is still there looking as perfect and desirable as ever.





STYLED BY MYSELF AND GRACE SERRIDGE  
CLUTCH BAG BY RUSIDESIGNS  
PHOTOGRAPHY BY XAVIER YOUNG





SIMPLE, DEWY MAKEUP

NUDE LIPSTICK



SLICKED BACK, LOW BUN



RAT AND BOA



CHERRY

PLUM

MASTIFF

MIDNIGHT

ANITA KO



A SLICKED BACK, LOW BUN HIGHLIGHTS THE BACKLESS NATURE OF THE TOP WITH A SIMPLE DEWY MAKE UP LOOK AND NUDE LIPSTICK SO THE JEWELS STAND OUT.

THIS LOOK HAS BEEN CREATED FOR MY STYLING PARTNER, GRACE. THE COMPLETE LOOK WOULD BE WORN FOR A RED CARPET SOIREE SO I CREATED A SIMPLE YET SOPHISTICATED FEEL USING JEWEL TONES WHICH WOULD COMPLIMENT HER BROWN HAIR.

# PERSONAL STYLING TASK RED CARPET SOIREE





MAXINE WYLDE



80'S COLOUR BLOCKING



@\_\_mmaxinewylde

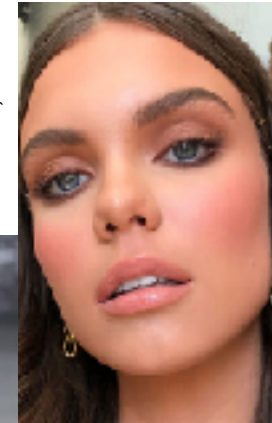


BALENCIAGA



OFF-WHITE

NATURAL, DEWY MAKEUP



JACQUEMUS



PRINCESS MARGARET'S HANDBAG  
PALOMA PICASSO. 1980s



ART DECO

# V&A EXHIBITION STYLING TASK BAGS: INSIDE OUT



LIGHTING



CRISTIANO PALMERINI



FENDI



BOTTEGA VENETA



MR PORTER. BROWNS. MATCHES.

CANARY WHARF



GUCCI



BALENCIAGA



THOM BROWNE

TEMPORARY BASKETBALL COURT DESIGNED IN YINKA ILORI'S SIGNATURE BRIGHT COLOURS AND PATTERNS.

# MENSWEAR STYLING MOODBOARD TAILORING X ATHLEISURE





@barrelljonesmusic

STREET STYLE TASK **IMAGE CAPTURE**