



GRADUATE PORTFOLIO

ELEANOR STEEL

3RD YEAR
2017 / 18

C O N T E N T S

GRADUATE COLLECTION **5** CROSSING THE RUBICON RESORT 2019

CONCEPT	6
PRINT DEVELOPMENT	12
SILHOUETTES	15
DESIGN DEVELOPMENT	16
LINE UP	24
RANGE PLAN	26
PHOTOSHOOT	29

BURBERRY COMPETITION **57** ELEANOR STEEL X BURBERRY AUTUMN/WINTER 2019

CONCEPT	58
SILHOUETTES	59
PRINT DEVELOPMENT	64
FABRIC PROCESSES	65
DESIGN DEVELOPMENT	66
LINE UP	70



GRADUATE COLLECTION

R E S O R T 10 6 '18
2 0 1 9

CROSSING THE RUBICON



“Our world’s oceans and climate are changing and we need to take urgent action before it’s too late.”

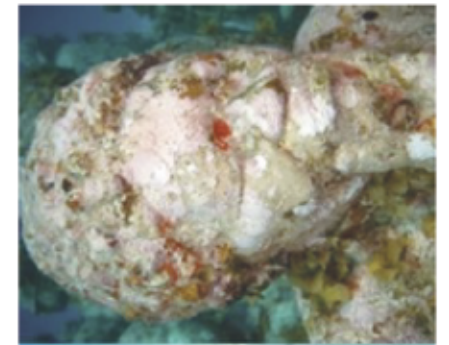
Diving in Australia allowed me to see the coral reefs first hand. While the seabed was still beautiful - most of the colours had been stripped away with the effects of mass bleaching due to global warming. These sights became the source of inspiration for my collection - this story has to be told .

JASON DECAIRES TAYLOR

C O N C E P T

“ We call it a museum for a very important reason. Museums are places of preservation, conservation and education. ”

Sculptor Jason deCaires Taylor has been an environmental champion for many years. Through his underwater museums and installations around the world, deCaires Taylor has highlighted the environmental damage happening to our oceans.



His sculptures form artificial reefs as the nooks and crevices allow the regeneration of new corals. They capture the beauty that's underwater – his created beauty will grow and change over the years to make an “interactive experience”.

“

FAMED SCULPTOR, JASON DECAIRES TAYLOR WILL SOON VISIT TOWNSVILLE AND NORTH QUEENSLAND, SCOPING A SITE FOR

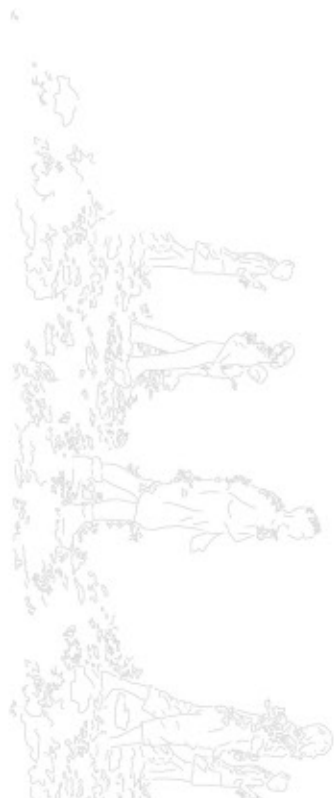
HIS NEXT UNDERWATER GALLERY AS A MEANS OF BOOSTING TOURISM AND PROTECTION FOR THE GREAT BARRIER REEF.

”





JASON DECAIRES TAYLOR



BLEACHED DENIM EFFECT - WHITE ACRYLIC PAINT



'CROSSING THE RUBICON' SCULPTURE



BLEACHED DENIM SAMPLE

'Crossing the Rubicon' (above) is one of my favourite Jason deCaires Taylor sculptures. It captures the essence and effect of climate change on our oceans; it is fast approaching the point of no return.

ENGRAVING EXPERIMENT



DENIM ENGRAVING TRIAL

The overall effect of engraving on the denim was visually comparable to the bleaching yet more precise and detailed, meaning I could further develop the intricacy of my print.

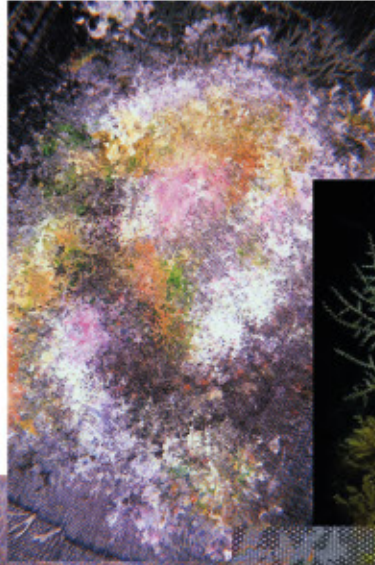
PRINT DEVELOPMENT



LIQUID DENIM ENGRAVING

'CROSSING THE RUBICON' SCULPTURE

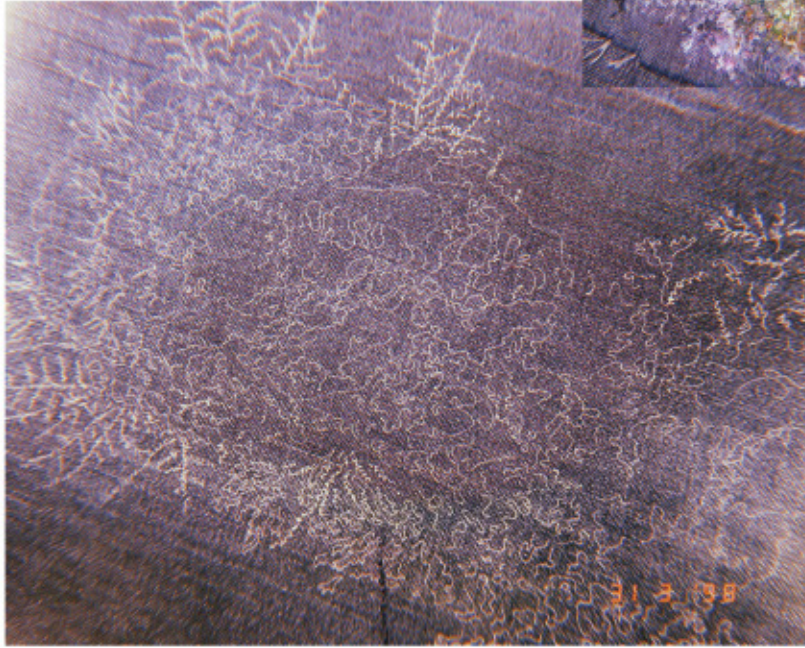
ACRYLIC PAINT ON DENIM



'THE SILENT EVOLUTION' BY JASON DECAIRES TAYLOR



NOCTURNAL SCULPTURE



FINAL FABRICS ENGRAVED

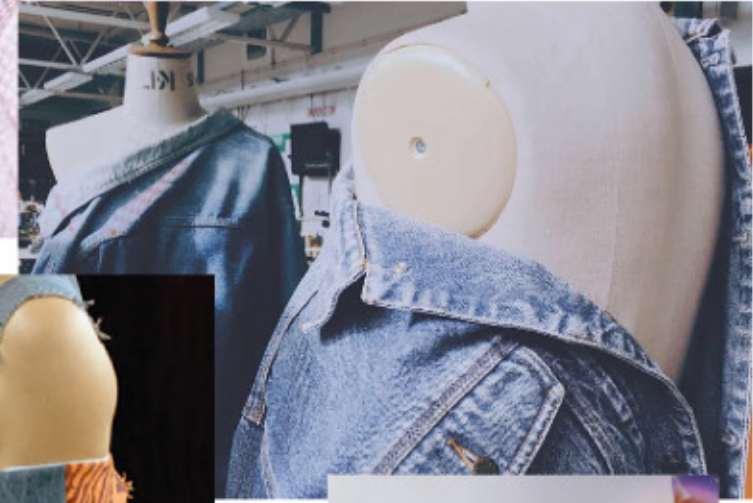


To achieve these engraving effects I have created a stencil pattern using CAD for my most favorite of Jason deCaires Taylor's works, 'The Silent Evolution' (above) and 'Crossing the Rubicon'. These stencil graphics are then engraved onto my chosen fabrics to create a delicate yet contemporary print for my collection.

SILHOUETTES



DENIM JACKET MANIPULATION



OFF-THE-SHOULDER INSPIRATION



ASYMMETRICAL INSPIRATION



To reflect the asymmetrical nature of coral, I will combine feminine tailored silhouettes with fluid, asymmetric and unconventional shapes.

With this asymmetric silhouette in mind, I have created a classic, cropped double breasted jacket. I have cut one side to be off the shoulder by lengthening the back neck edge on the left side as worn. Paired with this jacket are trousers with side slits to form the full suit.

The off-the-shoulder trouser suit shall be cut from blue denim. Engraving of my interpretation of Jason deCaires Taylor's Nocturnal sculpture shall embellish the back of the jacket and the side slit panels of the trousers.

DESIGN DEVELOPMENT





open out
from knee down -
right foot



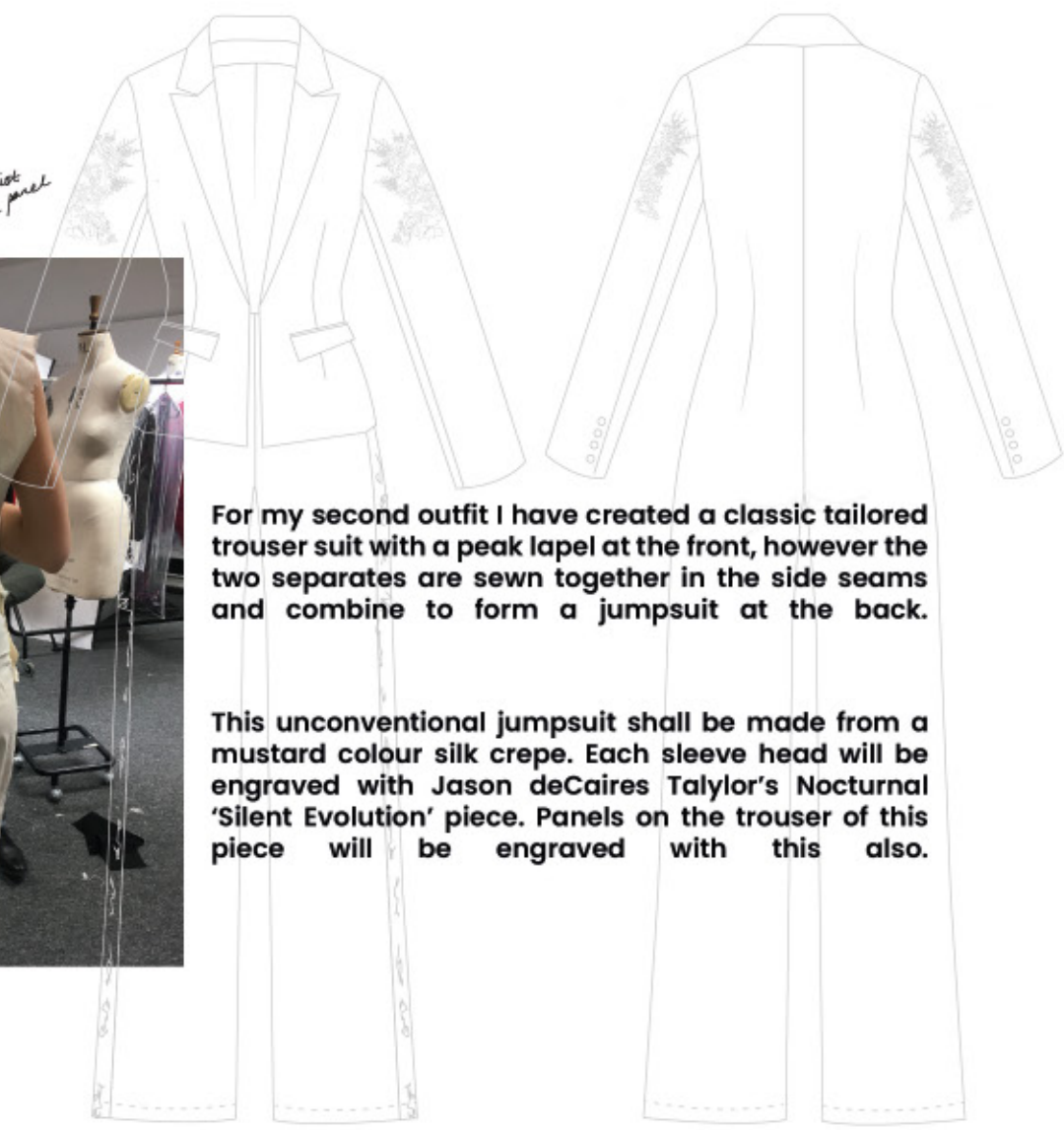
take out the
laces at the
back

lengthen
hemline



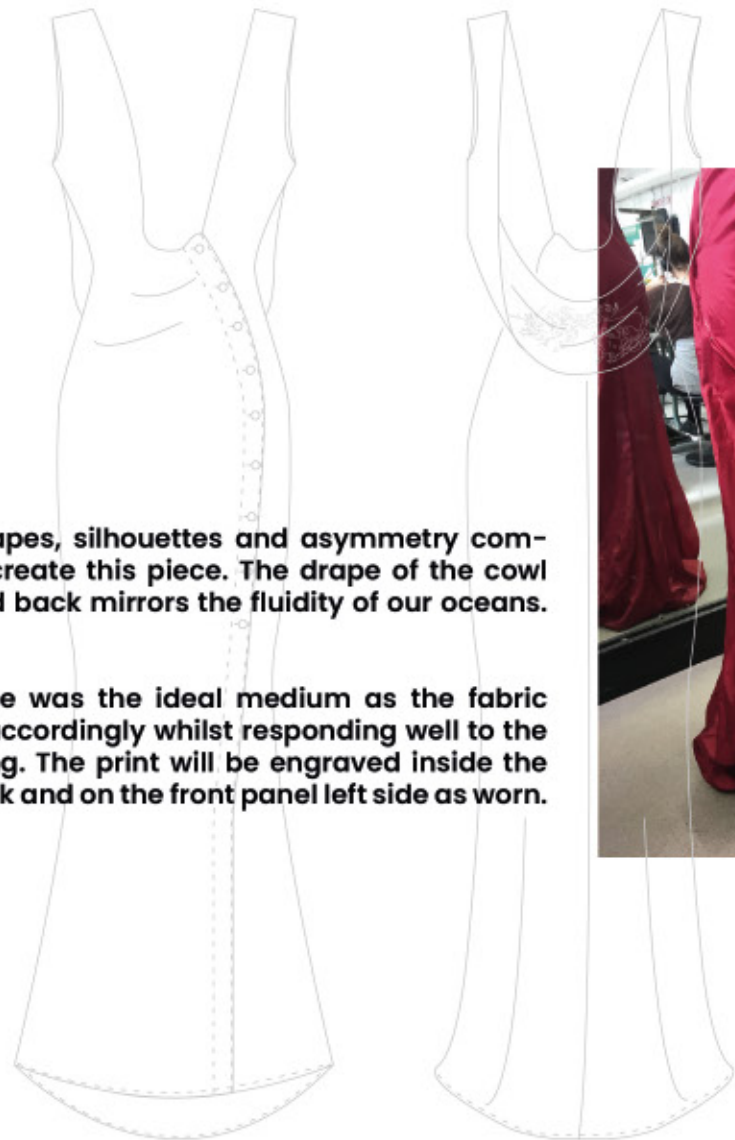
take in at waist
on back panel

open out
around the bottom



For my second outfit I have created a classic tailored trouser suit with a peak lapel at the front, however the two separates are sewn together in the side seams and combine to form a jumpsuit at the back.

This unconventional jumpsuit shall be made from a mustard colour silk crepe. Each sleeve head will be engraved with Jason deCaires Taylor's Nocturnal 'Silent Evolution' piece. Panels on the trouser of this piece will be engraved with this also.



Fluid shapes, silhouettes and asymmetry combine to create this piece. The drape of the cowl front and back mirrors the fluidity of our oceans.

Silk crepe was the ideal medium as the fabric drapes accordingly whilst responding well to the engraving. The print will be engraved inside the cowl back and on the front panel left side as worn.



*Drop Shoulder
by 1.5cm*

*Could need
LSP -
suggestion*



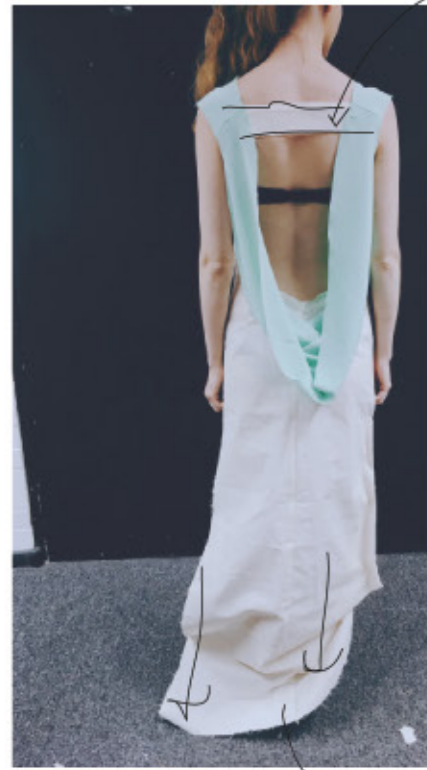
*more fabric -
like any old
photo*



lengthen hemline



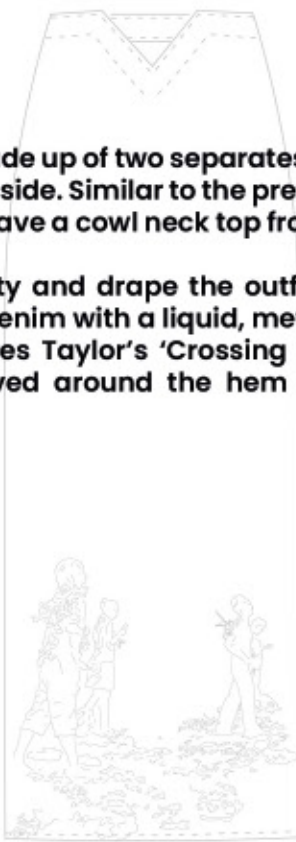
could neck top - suggest



remove back support strap

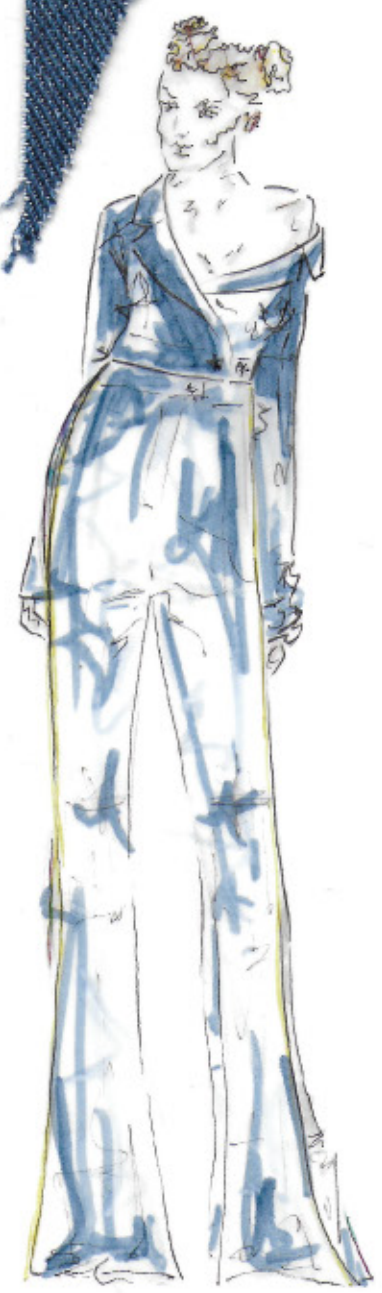


drop down so slight train



Outfit four will be made up of two separates, a top and a skirt buttoned to the side. Similar to the previous silhouette, outfit four will have a cowl neck top front and back.

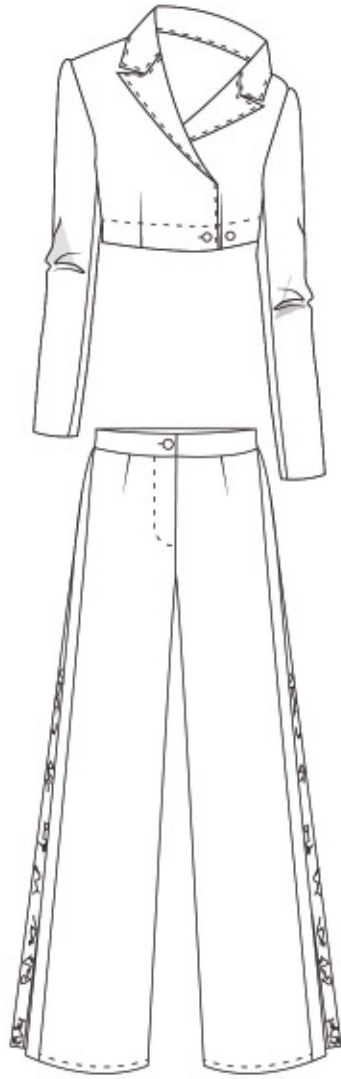
To achieve its fluidity and drape the outfit will be cut from a lightweight denim with a liquid, metallic surface finish. Jason deCaires Taylor's 'Crossing the Rubicon' print will be engraved around the hem of this skirt.



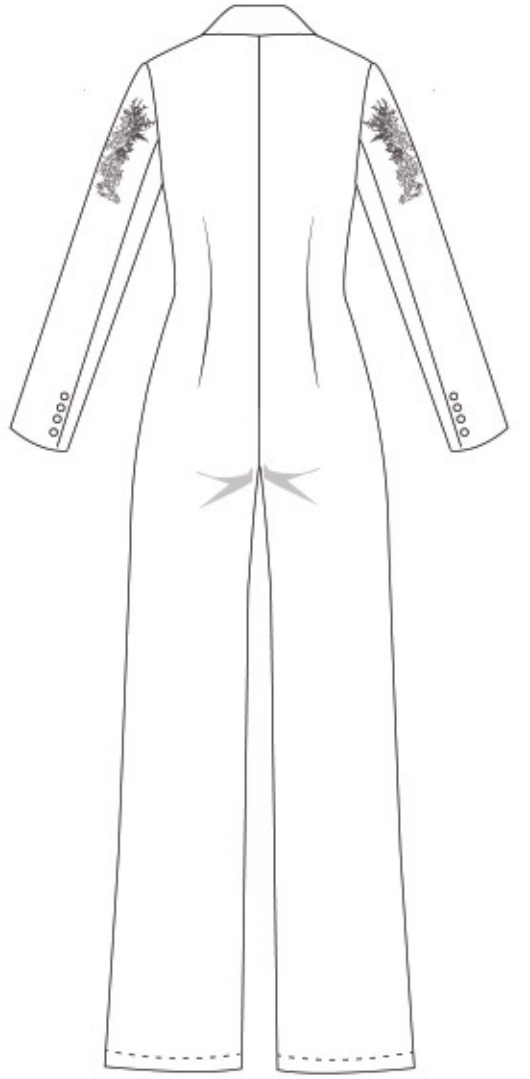
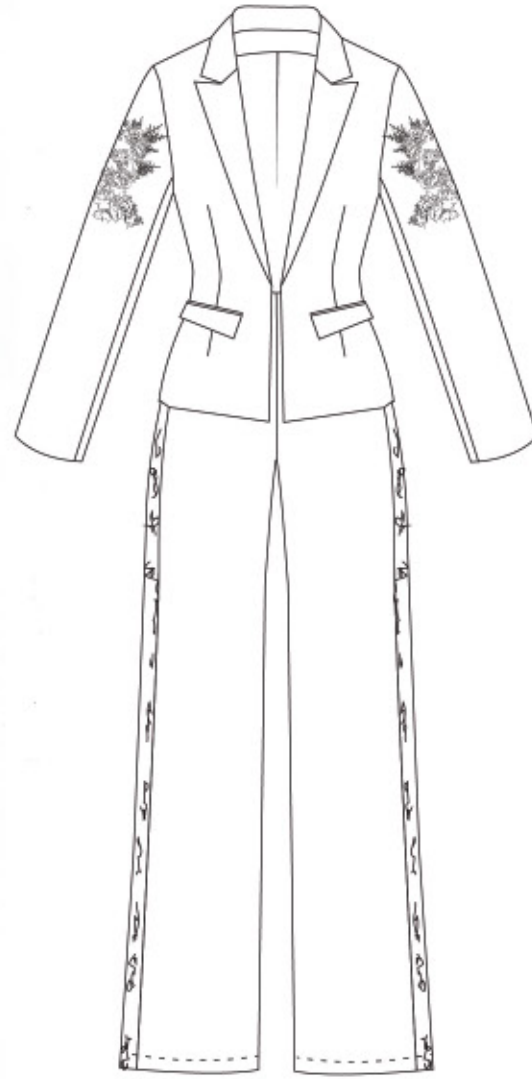
CROSSING THE RUBICON

R E S O R T
2 0 1 9

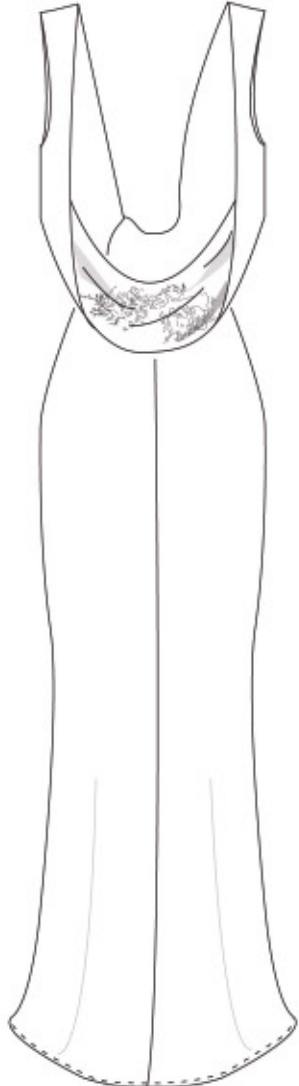
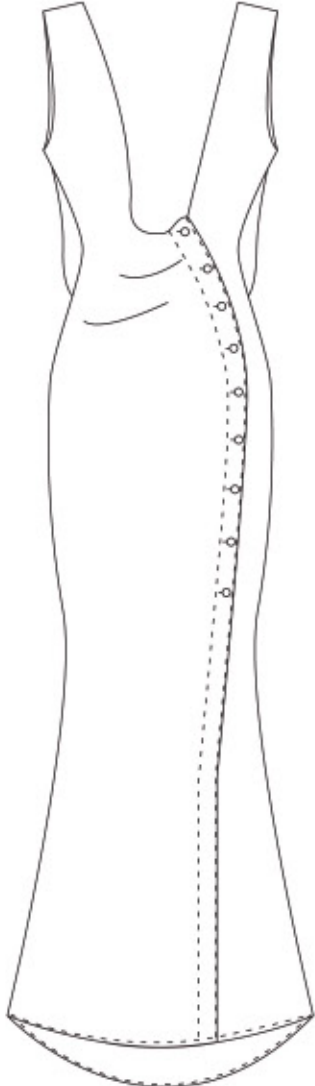
OUTFIT 1



OUTFIT 2



OUTFIT 3



OUTFIT 4

